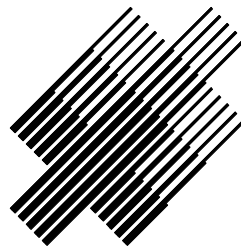
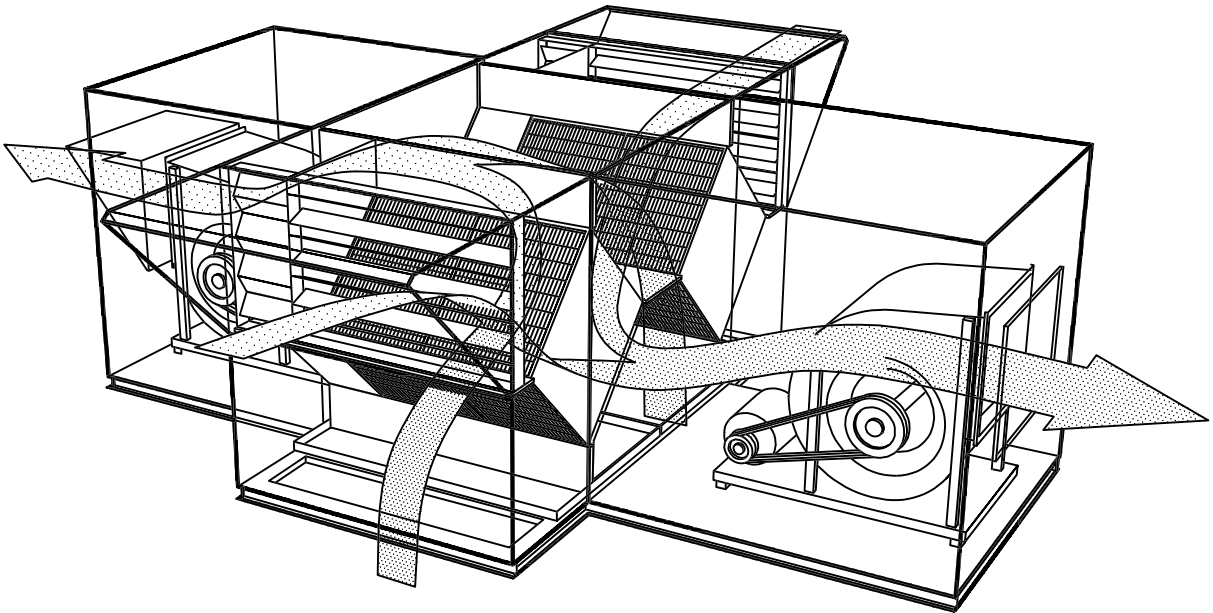


Heat--Changer *by Xetex*

Energy Recovery Units

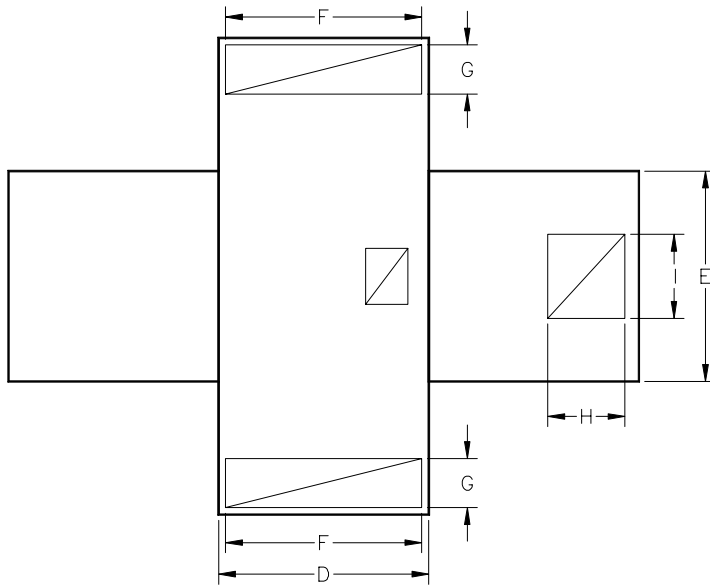
Model XTR Model XLR



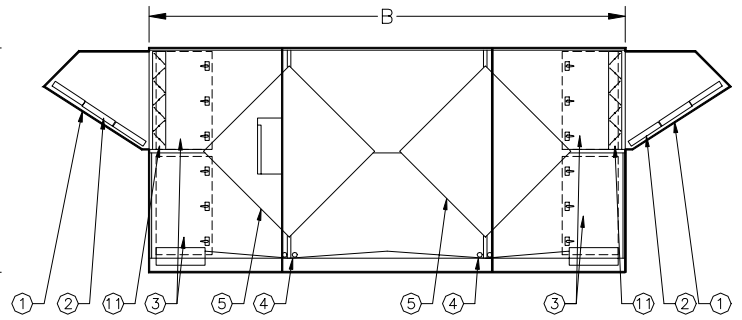
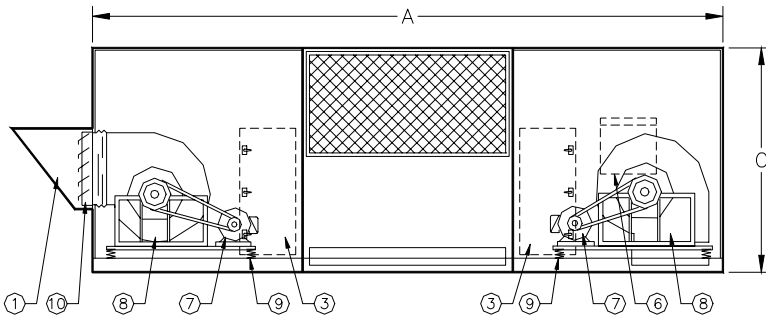
Xetex Inc.

3530 East 28th Street
Minneapolis, MN 55406
(612) 724-3101
(612) 721-6303 Fax

MODEL: XTR-



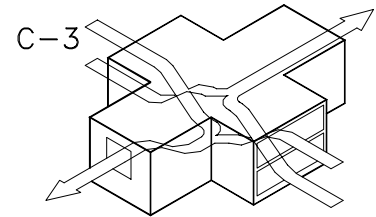
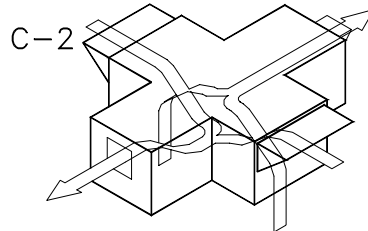
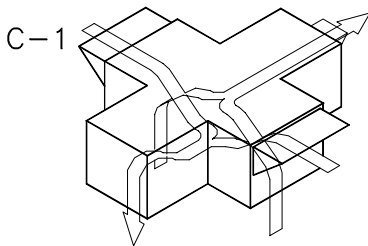
- ① WEATHERHOOD WITH BIRDSCREEN
- ② 2" 30/30 TYPE PLEATED FILTERS
- ③ ACCESS DOOR WITH CAM-LOK LATCHES
- ④ FPT DRAINS
- ⑤ ALUMINUM FLAT PLATE HEAT EXCHANGER
- ⑥ NEMA 3R ELECTRICAL ENCLOSURE
- ⑦ NEMA ODP MOTOR, 1800 RPM, ____V/60/3ø
- ⑧ BI DWDI BLOWER
- ⑨ SPRING VIBRATION ISOLATORS
- ⑩ OUTSIDE AIR SHUTOFF DAMPER
- ⑪ EXHAUST BACKDRAFT DAMPER



MODEL #	DIMENSIONS									BYPASS A & D+	BLOWER SIZE	MOTOR HP(ea.)*	NOM CFM	NOMINAL EFF
	A	B	C	D	E	F	G	H	I					
XTR 40-120	225.00	184.00	80.00	64.50	76.50	56.00	20.00	24.00	32.00	20.00	22" BI	25HP	17,000	72%
XTR 40-144	237.00	184.00	80.00	76.50	76.50	68.00	20.00	26.00	36.00	24.00	24" BI	25HP	22,000	72%
XTR 50-120	277.00	210.00	100.00	64.50	102.50	56.00	20.00	26.00	36.00	20.00	24" BI	25HP	22,000	75%
XTR 50-144	289.00	210.00	100.00	76.50	102.50	68.00	20.00	32.00	42.00	24.00	30" BI	30HP	27,000	75%
XTR 50-192	311.00	210.00	100.00	98.50	102.50	90.00	20.00	35.00	48.00	32.00	33" BI	40HP	36,000	75%
XTR 80-120	277.00	314.00	124.00	64.50	152.50	56.00	30.00	39.00	52.00	20.00	36" BI	50HP	40,000	75%
XTR 80-144	289.00	314.00	124.00	76.50	152.50	68.00	30.00	42.00	58.00	24.00	40" BI	70HP	50,000	75%
XTR 80-192	311.00	314.00	124.00	98.50	152.50	90.00	30.00	52.00	70.00	32.00	49" BI	90HP	65,000	75%

* MOTOR HP IS BASED ON NOMINAL CFM AND MAY NOT BE SUFFICIENT FOR MAX CFM RATINGS OR HIGH E.S.P.

SPECIFICATIONS AND DIMENSIONS SUBJECT TO CHANGE WITHOUT NOTICE.

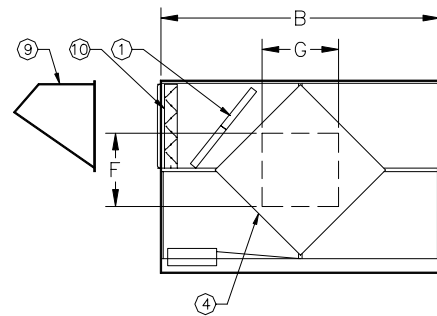
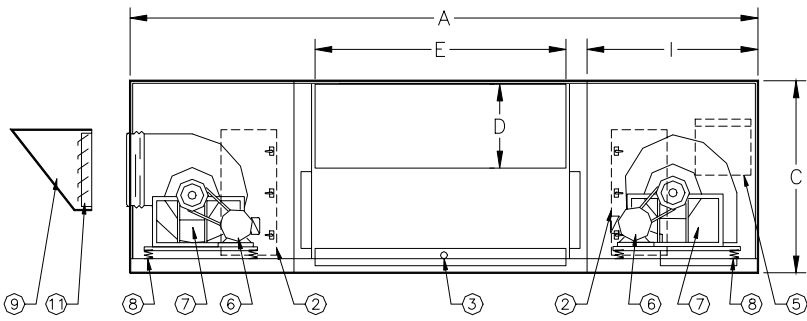
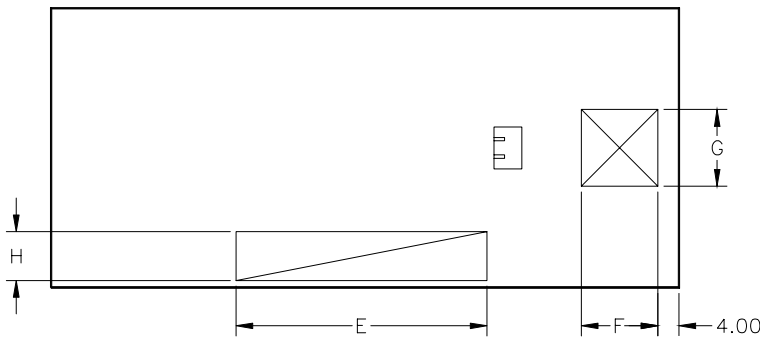


AIR FLOW CONFIGURATIONS



MODEL: XLR-

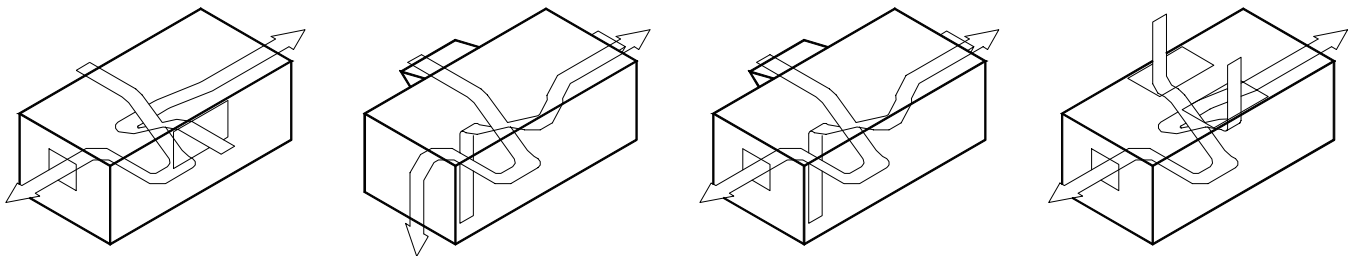
- ① 2" 30/30 TYPE PLEATED FILTERS
- ② ACCESS DOOR WITH CAM-LOK LATCHES
- ③ FPT DRAINS
- ④ ALUMINUM FLAT PLATE HEAT EXCHANGER
- ⑤ NEMA 3R ELECTRICAL ENCLOSURE
- ⑥ NEMA ODP MOTOR, 1800 RPM, ____V/60/3ø
- ⑦ FC DWDI BLOWER
- ⑧ RUBBER IN SHEER VIBRATION ISOLATORS
- OUTDOOR UNITS
- ⑨ WEATHERHOOD WITH BIRDSCREEN
- ⑩ OUTSIDE AIR SHUTOFF DAMPER
- ⑪ EXHAUST BACKDRAFT DAMPER



MODEL #	DIMENSIONS									EST. WEIGHT	BLOWER SIZE	MOTOR HP(ea.)*	NOM CFM	NOMINAL EFFICIENCY
	A	B	C	D	E	F	G	H	I					
XLR 30-36	148.00	74.00	52.00	22.00	36.00	14.00	16.00	15.00	50.00	2000	12" FC	3HP	3800	70%
XLR 30-48	159.00	74.00	52.00	22.00	47.00	16.00	19.00	15.00	50.00	2250	15" FC	5HP	5000	70%
XLR 30-60	171.00	74.00	52.00	22.00	59.00	19.00	22.00	15.00	50.00	2500	18" FC	7.5HP	6000	70%
XLR 40-48	175.00	96.00	72.00	31.00	47.00	19.00	22.00	20.00	58.00	3500	18" FC	7.5HP	7000	72%
XLR 40-72	199.00	96.00	72.00	31.00	71.00	25.00	25.00	20.00	58.00	4000	20" FC	10HP	10,500	72%
XLR 40-96	223.00	96.00	72.00	31.00	95.00	27.50	27.50	20.00	58.00	4500	22" FC	15HP	14,000	72%
XLR 50-60	231.00	122.00	98.00	44.00	59.00	25.00	25.00	28.00	80.00	5200	20" FC	10HP	11,000	75%
XLR 50-84	255.00	122.00	98.00	44.00	83.00	28.00	28.00	28.00	80.00	6000	22" FC	15HP	16,000	75%
XLR 50-108	278.00	122.00	98.00	44.00	106.00	32.00	32.00	28.00	80.00	6800	25" FC	15HP	20,000	75%
XLR 50-132	302.00	122.00	98.00	44.00	130.00	34.50	34.50	28.00	80.00	7800	27" FC	20HP	25,000	75%

* MOTOR HP IS BASED ON NOMINAL CFM AND MAY NOT BE SUFFICIENT FOR MAX CFM RATINGS OR HIGH E.S.P.

SPECIFICATIONS AND DIMENSIONS SUBJECT TO CHANGE WITHOUT NOTICE.



AIR FLOW CONFIGURATIONS



Heat-X-Changer by XeteX

Model XTR/XLR Unit Specification

Contractor shall provide a Heat-X-Changer Model XTR/XLR high capacity packaged (roof mounted/indoor mounted) air-to-air heat recovery ventilator as manufactured by XeteX Inc. Unit to include aluminum flat plate exchanger, supply air and exhaust air blowers, motors with starters and relays, outside air filters, adjustable defrost control, and specified options.

Unit shall have a welded structural steel base with structural supports under blowers and components. Frame shall be coated with rust inhibiting paint. Lifting lugs shall be an integral part of the base. Unit floor shall be minimum 16 gauge galvanized steel.

Unit housing shall be of formed heavy gauge galvanized steel supports (18 gauge min). Panels to be 18 gauge galvanized steel with 1" thick 3# density hardboard fiberglass insulation with reinforced aluminum lining secured with metal clips and sealed with aluminum tape and silicone sealant to provide a complete vapor barrier and non-contaminating surface to all air streams. Framing and panels of dissimilar metals that could create a galvanic effect are not allowed. Exchanger section shall have a full length and width drain pan minimum 3" deep with FPT drains on supply and exhaust air plenums minimum.

Provide access to all exchanger surfaces, blowers, motors, filters, through double wall gasketed access doors held closed by adjustable cam-lock latches. Continuous hollow rubber gasket shall be applied to all access openings to provide water and air-tight seals.

Furnish a "Heat-X-Changer" stationary flat plate air-to-air heat exchanger as manufactured by XeteX, Inc. Exchanger shall be constructed of rigid, seamless, leakproof air channels that eliminate cross-contamination between airflows. Exposed folded/crimped edges are not acceptable. Assembled exchanger shall be virtually "crush proof" and be capable of being installed vertically or horizontally without crushing or settling of the individual plates. Exhaust air channel shall be totally open with absolutely no obstructions allowed that will accumulate dust, dirt or debris. Thermally bonded aluminum plates must be capable of withstanding pressure differentials up to 20" w.g. without deforming air passages. Exchanger shall be reinforced by rigid aluminum extrusions to protect the face of the exchanger from damage during installation, cleaning or maintenance. The entire cell heat transfer surface shall be capable of visible inspection and cleaning with low pressure steam or hot water.

Blowers shall be forward curved DWDI class I for quiet efficient operation arranged in a draw through configuration relative to exchanger. Motors to be efficient ODP T-frame, 1750 rpm nominal with minimum service factor of 1.15 mounted on adjustable base. Motor and blower to be mounted on common frame and isolated from unit case with RIS isolators and flexible duct connections. Motors and blowers shall have V-belt drives with variable pitch sheaves on motors. A hollow rubber gasket around the fan discharge shall provide an air tight seal while allowing for easy removal and replacement of the fan without screws or permanent fasteners. The discharge gasket shall isolate the fan from the unit casing and eliminate the requirement for an expansion duct fitting.

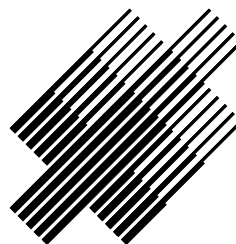
Electrical controls shall include motor starters with overloads, fuses, control transformer for low voltage controls, service switch and terminal points.

Outdoor air and/or return air filters shall be 2" pleated 30/30 type. Filters shall be mounted within unit in galvanized holding frames upstream of exchanger and accessible through access panels.

Dampers shall have 16 gauge galvanized hat channel frames and blades with 1/2" cadmium plated shafts and bronze bearings. Low leakage dampers have vinyl blade seals and stainless steel jamb seals. Outside air damper to be parallel blade type with 2-position overload proof direct coupled actuator. Face and bypass dampers to be opposed blade type with modulating overload proof direct coupled actuators. Exhaust air backdraft damper to be parallel blade with extruded aluminum blades and frame, low leakage type with silicone seals.

Weatherized outdoor construction shall include; roof panels that are cross broken to allow drainage, capped seams, weather hoods with birdscreens, outside air shut-off damper and exhaust air backdraft damper. Secondary roof panels that could trap moisture are not allowed. Roof curb shall be heavy gauge galvanized steel with additional supports and cross members as needed. Curb to have 1" to 1.5" thick fiberglass insulation and wood nailer.

Represented By:



XeteX Inc.

3530 East 28th Street
Minneapolis, MN 55406
(612) 724-3101
(612) 721-6303 Fax