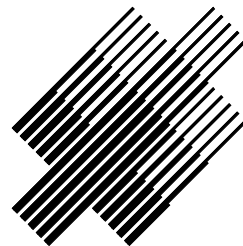
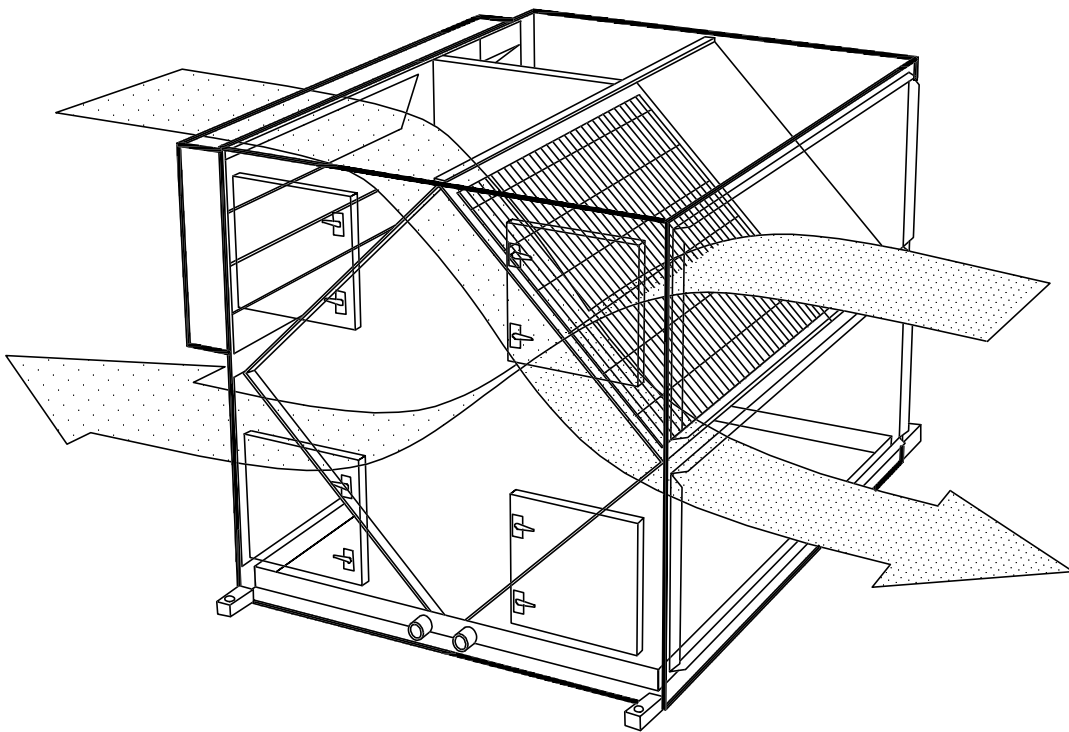


# Heat--Changer *by Xetex*

## Energy Recovery Units

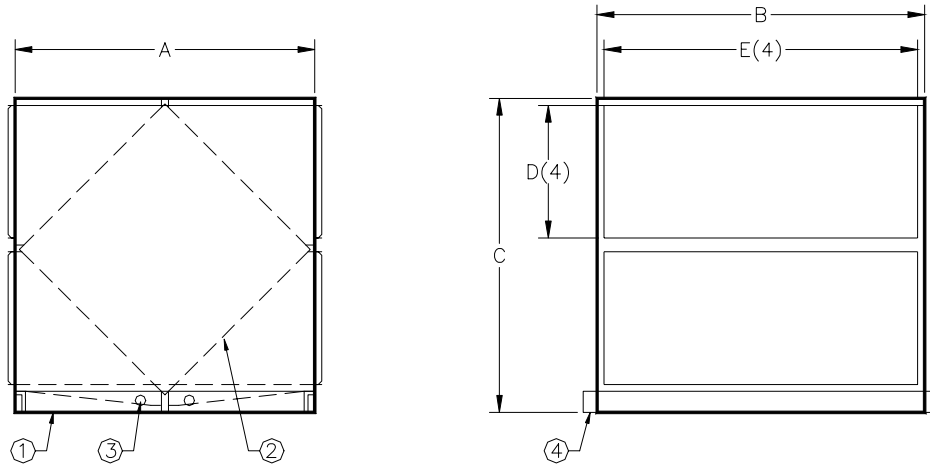
### Model XC



**Xetex Inc.**

3530 East 28th Street  
Minneapolis, MN 55406  
(612) 724-3101  
(612) 721-6303 Fax

# MODEL: XC-

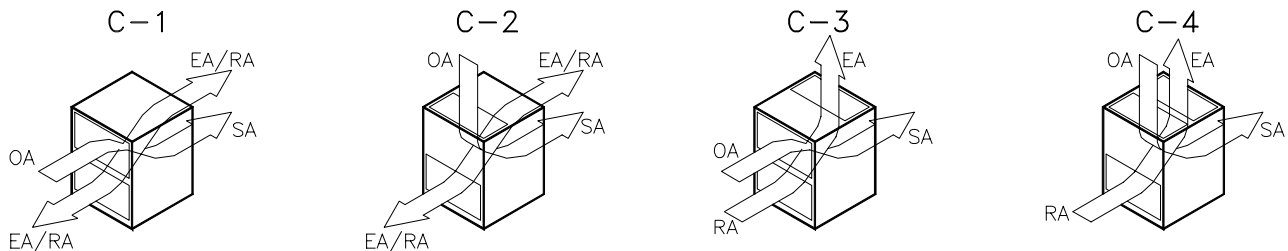


- ① HEAVY GAUGE GALVANIZED STEEL CASE
- ② ALUMINUM FLAT PLATE HEAT EXCHANGER
- ③ FPT DRAINS
- ④ LIFTING SUPPORTS

MODEL #	DIMENSIONS					DRAINS	EST. WT.	NOM. CFM	
	A	B	C	D	E				
XC14-18	20.00	20.00	22.00	8.00	18.00	1/2	50	700	
XC14-24	20.00	26.00	22.00	8.00	24.00	1/2	65	1000	
XC20-18	31.00	20.00	32.00	13.00	18.00	3/4	115	1000	
XC20-24	31.00	26.00	32.00	13.00	24.00	3/4	140	1500	
XC20-36	31.00	38.00	32.00	13.00	36.00	3/4	175	2200	
XC24-24	36.00	26.00	38.00	16.00	24.00	3/4	180	1800	
XC24-36	36.00	38.00	38.00	16.00	36.00	3/4	235	2800	
XC24-48	36.00	50.00	38.00	16.00	48.00	3/4	300	3800	
XC30-24	44.00	26.00	46.00	19.00	24.00	1.0	290	2200	
XC30-36	44.00	37.50	46.00	19.00	35.00	1.0	360	3500	
XC30-48	44.00	49.50	46.00	19.00	47.00	1.0	490	5000	
XC30-60	44.00	61.00	46.00	19.00	58.00	1.0	600	6000	
XC40-36	60.00	38.00	63.00	27.00	36.00	1.0	675	5000	
XC40-48	60.00	50.00	63.00	27.00	48.00	1.0	850	7000	
XC40-60	60.00	62.00	63.00	27.00	60.00	1 1/4	1010	8500	
XC40-72	60.00	74.00	64.00	27.00	72.00	1 1/4	1200	10,500	
XC50-48	72.00	50.00	77.00	33.00	48.00	1 1/4	1150	9000	
XC50-60	72.00	62.00	77.00	33.00	60.00	1 1/4	1370	11,000	
XC50-72	72.00	74.00	77.00	33.00	71.00	1 1/4	1650	13,500	
XC50-96	72.00	98.00	77.00	33.00	95.00	1 1/2	2300	18,000	
XC50-108	72.00	110.00	78.00	33.00	107.00	1 1/2	2800	20,000	
XC60-72	86.00	74.00	91.00	40.00	71.00	1 1/2	3250	18,000	
XC60-96	86.00	98.00	91.00	40.00	95.00	2.0	4850	24,000	
XC60-120	86.00	122.00	92.00	40.00	118.00	2.0	7300	30,000	
XC80-72	114.00	74.00	123.00	52.00	71.00	2.0	3250	22,000	
XC80-108	114.00	110.00	123.00	52.00	107.00	2.0	4850	40,000	
XC80-144	114.00	146.00	123.00	52.00	142.00	2.0	7300	50,000	

CONSULT FACTORY FOR IN BETWEEN SIZES.

SPECIFICATIONS AND DIMENSIONS SUBJECT TO CHANGE WITHOUT NOTICE.

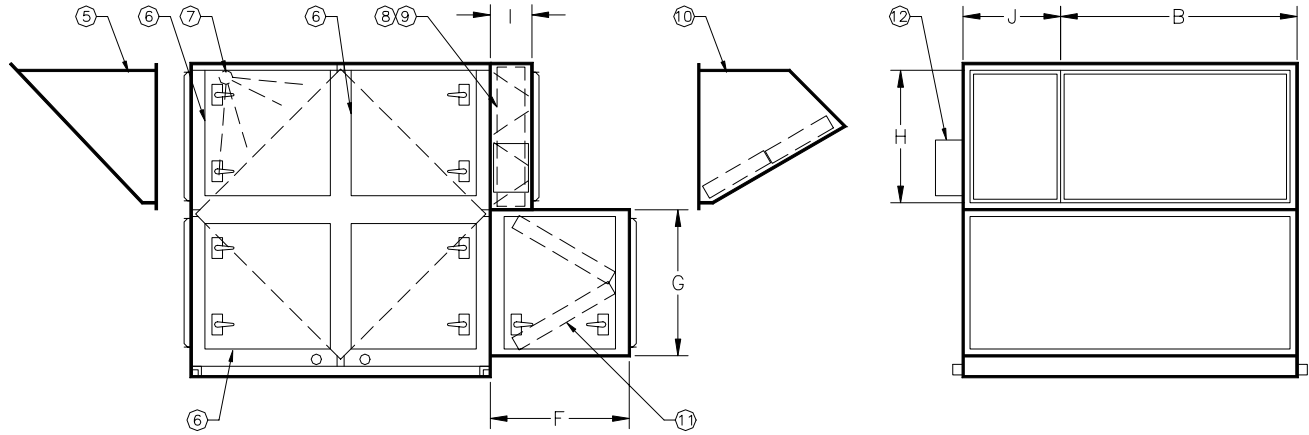


AIR FLOW CONFIGURATIONS



OPTIONS

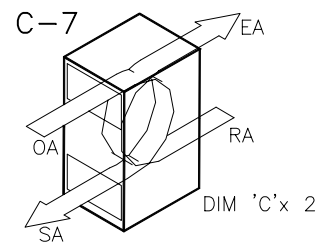
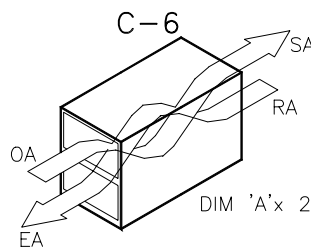
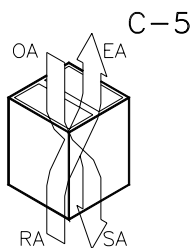
- ⑤ EXHAUST AIR WEATHERHOOD WITH BIRDSCREEN
- ⑥ ACCESS DOOR WITH CAM-LOK LATCHES
- ⑦ WATERWASH OR INDIRECT EVAP. COOLING SPRAY
- ⑧ OUTSIDE AIR SHUTOFF DAMPER
- ⑨ FACE AND BYPASS DAMPER
- ⑩ OUTSIDE AIR WEATHERHOOD/ FILTERS OPTIONAL
- ⑪ 2" 30/30 TYPE PLEATED FILTER SECTION (FOR SUPPLY AND/OR RETURN AIR)
- ⑫ DAMPER OPERATOR AND CONTROLS
- ⑬ ALL ALUMINUM CASE



MODEL #	DIMENSIONS				BYPASS B & E+	FILTER SIZES PER SECTION	QTY	NOTES
	F	G	H	I				
XC14-18	14.00	9.00	8.00	6.00	6.00	12 x 18 x 1	2	WATERWASH/IDEC, ACCESS PANELS N/A
XC14-24	14.00	9.00	8.00	6.00	6.00	12 x 24 x 1	2	
XC20-18	14.00	14.00	13.00	6.00	6.00	12 x 18 x 2	2	WATERWASH/IDEC, ACCESS PANELS N/A
XC20-24	14.00	14.00	13.00	6.00	8.00	12 x 24 x 2	2	
XC20-36	14.00	14.00	13.00	6.00	12.00	12 x 18 x 2	4	
XC24-24	24.00	17.00	16.00	6.00	8.00	20 x 24 x 2	2	ACCESS PANELS N/A
XC24-36	24.00	17.00	16.00	6.00	12.00	20 x 18 x 2	4	
XC24-48	24.00	17.00	16.00	6.00	16.00	20 x 24 x 2	4	
XC30-24	26.00	20.00	19.00	6.00	8.00	20 x 24 x 2	2	ACCESS PANELS CONSULT FACTORY
XC30-36	26.00	20.00	19.00	6.00	12.00	24 x 18 x 2	4	
XC30-48	26.00	20.00	19.00	6.00	16.00	24 x 24 x 2	4	
XC30-60	26.00	20.00	19.00	6.00	20.00	24 x 20 x 2	6	
XC40-36	26.00	28.00	27.00	8.00	12.00	24 x 18 x 2	6	
XC40-48	26.00	28.00	27.00	8.00	16.00	24 x 24 x 2	6	
XC40-60	26.00	28.00	27.00	8.00	20.00	24 x 20 x 2	9	
XC40-72	26.00	28.00	27.00	8.00	24.00	24 x 24 x 2	9	
XC50-48	28.00	34.00	33.00	12.00	16.00	24 x 24 x 2	8	
XC50-60	28.00	34.00	33.00	12.00	20.00	24 x 20 x 2	12	
XC50-72	28.00	34.00	33.00	12.00	24.00	24 x 24 x 2	12	
XC50-96	28.00	34.00	33.00	12.00	30.00	24 x 24 x 2	16	
XC50-108	28.00	34.00	33.00	12.00	36.00	24 x 18 x 2	24	
XC60-72	28.00	44.00	40.00	12.00	24.00	24 x 24 x 2	12	
XC60-96	28.00	44.00	40.00	12.00	30.00	24 x 24 x 2	16	
XC60-120	28.00	44.00	40.00	12.00	40.00	24 x 24 x 2	20	
XC80-72	28.00	56.00	52.00	12.00	24.00	24 x 24 x 2	18	
XC80-108	28.00	56.00	52.00	12.00	36.00	24 x 18 x 2	36	
XC80-144	28.00	56.00	52.00	12.00	48.00	24 x 24 x 2	36	

N/A = NOT AVAILABLE

CONSULT FACTORY FOR ROOF MOUNTED UNIT OPTIONS. SPECIFICATIONS AND DIMENSIONS SUBJECT TO CHANGE WITHOUT NOTICE.





## Model XC Unit Specification

Contractor shall provide a Heat-X-Changer Model XC indoor mounted air-to-air heat recovery module as manufactured by XeteX Inc. Unit to include aluminum flat plate exchanger in case including, (Optional) outside air filters, face & bypass dampers, adjustable frost control.

Unit shall have a welded structural steel base. Frame shall be coated with rust inhibiting paint. Lifting lugs shall be an integral part of the base. Unit floor shall be minimum 16 gauge galvanized steel.

Unit housing shall be of formed heavy gauge galvanized steel supports (18 gauge min). Panels to be 18 gauge galvanized steel with 1" thick 3# density hardboard fiberglass insulation with reinforced aluminum lining secured with metal clips and sealed with aluminum tape and silicone sealant to provide a complete vapor barrier and non-contaminating surface to all air streams. Framing and panels of dissimilar metals that could create a galvanic effect are not allowed. Unit shall have a full length and width drain pan minimum 3" deep with FPT drains on supply and exhaust air plenums minimum.

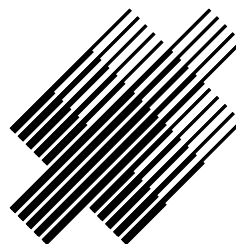
Provide access to all exchanger surfaces and filters through double wall gasketed access doors held closed by adjustable cam-lock latches. Continuous hollow rubber gasket shall be applied to all access openings to provide water and air-tight seals.

Furnish a "Heat-X-Changer" stationary flat plate air-to-air heat exchanger as manufactured by XeteX, Inc. Exchanger shall be constructed of rigid, seamless, leakproof air channels that eliminate cross-contamination between airflows. Exposed folded/crimped edges are not acceptable. Assembled exchanger shall be virtually "crush proof" and be capable of being installed vertically or horizontally without crushing or settling of the individual plates. Exhaust air channel shall be totally open with absolutely no obstructions allowed that will accumulate dust, dirt or debris. Thermally bonded aluminum plates must be capable of withstanding pressure differentials up to 20" w.g. without deforming air passages. Exchanger shall be reinforced by rigid aluminum extrusions to protect the face of the exchanger from damage during installation, cleaning or maintenance. The entire cell heat transfer surface shall be capable of visible inspection and cleaning with low pressure steam or hot water.

Dampers shall have 16 gauge galvanized hat channel frames and blades with 1/2" cadmium plated shafts and bronze bearings. Low leakage dampers have vinyl blade seals and stainless steel jamb seals. Outside air damper to be parallel blade type with 2-position overload proof direct coupled actuator. Exhaust air backdraft damper to be parallel blade with extruded aluminum blades and frame, low leakage type with silicone seals.

Outdoor air and/or return air filters shall be 2" pleated 30/30 type. Filters shall be mounted within unit in galvanized holding frames upstream of exchanger and accessible through access panels.

Represented By:



**XeteX Inc.**

3530 East 28th Street  
Minneapolis, MN 55406  
(612) 724-3101  
(612) 721-6303 Fax