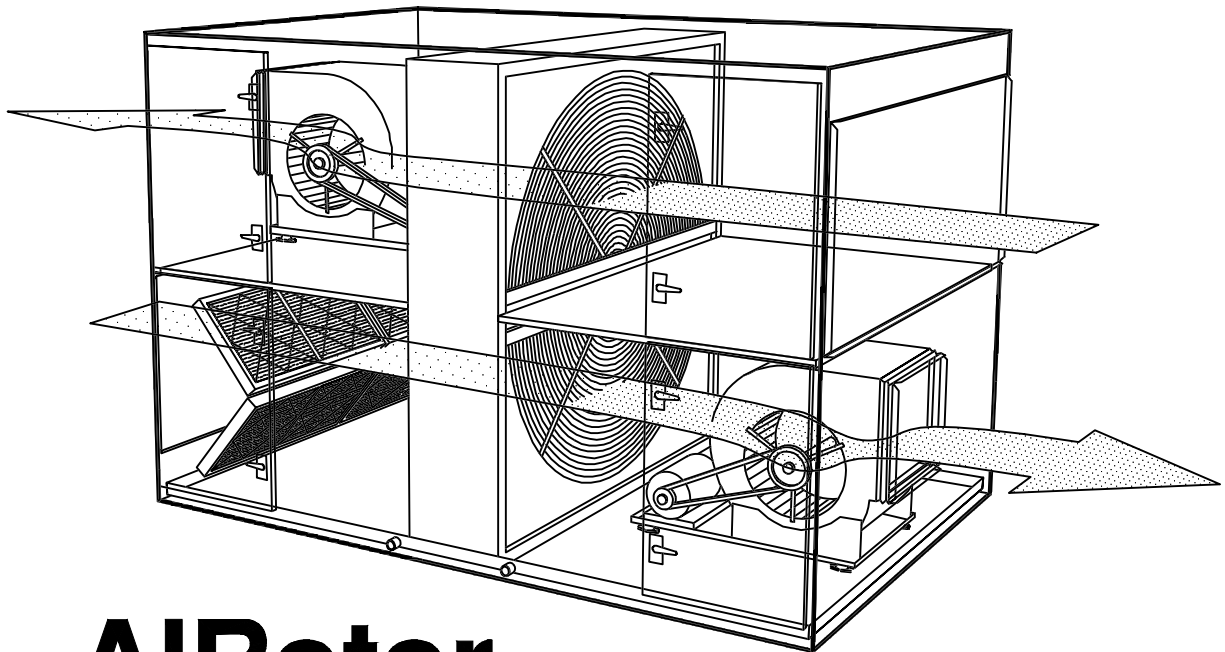


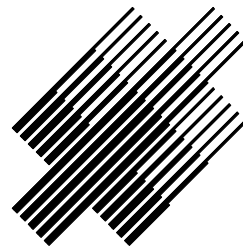
Heat--Changer *by Xetex*

Energy Recovery Units

Model AHR Model AHS



AIRotor
by Xetex

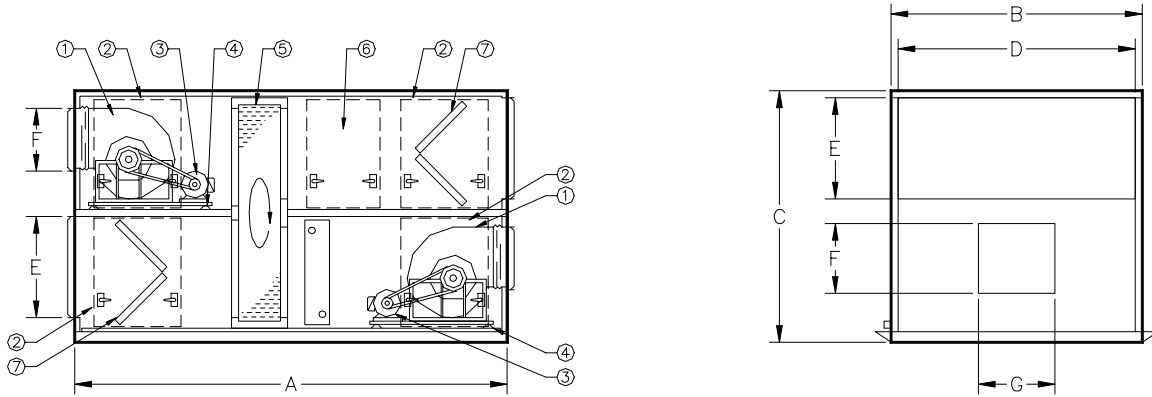


Xetex Inc.

3530 East 28th Street
Minneapolis, MN 55406
(612) 724-3101
(612) 721-6303 Fax

MODEL: AHR-

- ① FC DWDI BLOWER
- ② ACCESS DOOR WITH CAM-LOK LATCHES
- ③ NEMA ODP MOTORS
- ④ VIBRATION ISOLATORS
- ⑤ ALUMINUM ROTARY HEAT EXCHANGER
- ⑥ NEMA ELECTRICAL ENCLOSURE
- ⑦ 2" 30/30 TYPE PLEATED FILTERS (OA/RA)

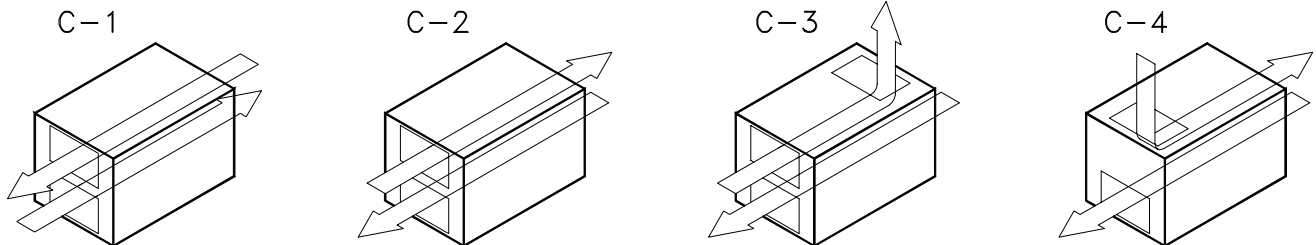


MODEL #	DIMENSIONS							BLOWER SIZE	MOTOR HP(ea.)*	EST. WEIGHT	NOMINAL CFM	NOMINAL EFF
	A**	B	C	D	E	F	G					
AHR-600	82.00	36.00	37.00	32.00	14.00	10.50	9.00	7" FC	1HP	950	700	75%
AHR-700	82.00	36.00	37.00	32.00	14.00	10.50	12.00	9" FC	1HP	1000	850	75%
AHR-850	108.00	46.00	42.00	42.00	16.00	10.50	12.00	9" FC	2HP	1400	1250	75%
AHR-1100	108.00	50.00	52.00	46.00	24.00	12.00	14.00	10" FC	3HP	2000	2500	75%
AHR-1300	122.00	60.00	64.00	56.00	26.00	14.00	16.00	12" FC	5HP	2250	3200	75%
AHR-1600	132.00	68.00	72.00	62.00	30.00	16.50	19.00	15" FC	7.5HP	3000	5000	75%
AHR-1900	132.00	82.00	88.00	68.00	35.00	19.50	22.50	18" FC	10HP	3600	7000	75%
AHR-2100	144.00	90.00	96.00	80.00	40.00	25.00	25.00	20" FC	15HP	4500	9000	75%
AHR-2250	144.00	96.00	100.00	90.00	45.00	28.00	28.00	22" FC	15HP	5500	11,000	75%
AHR-2500	156.00	108.00	110.00	102.00	48.00	28.00	28.00	22" FC	15HP	7000	15,000	75%
AHR-2750	168.00	116.00	120.00	110.00	54.00	32.00	32.00	25" FC	20HP	8000	18,000	75%
AHR-3000	192.00	124.00	130.00	112.00	56.00	36.00	36.00	27" FC	30HP	10000	25,000	75%

CONSULT FACTORY FOR AVAILABILITY FOR AHR-3000

* MOTOR HP IS BASED ON NOMINAL CFM AND MAY NOT BE SUFFICIENT FOR MAX CFM RATINGS OR HIGH E.S.P.

** ADD 24" MIN. TO DIMENSION 'A' FOR COIL SECTION. SPECIFICATIONS AND DIMENSIONS SUBJECT TO CHANGE WITHOUT NOTICE.

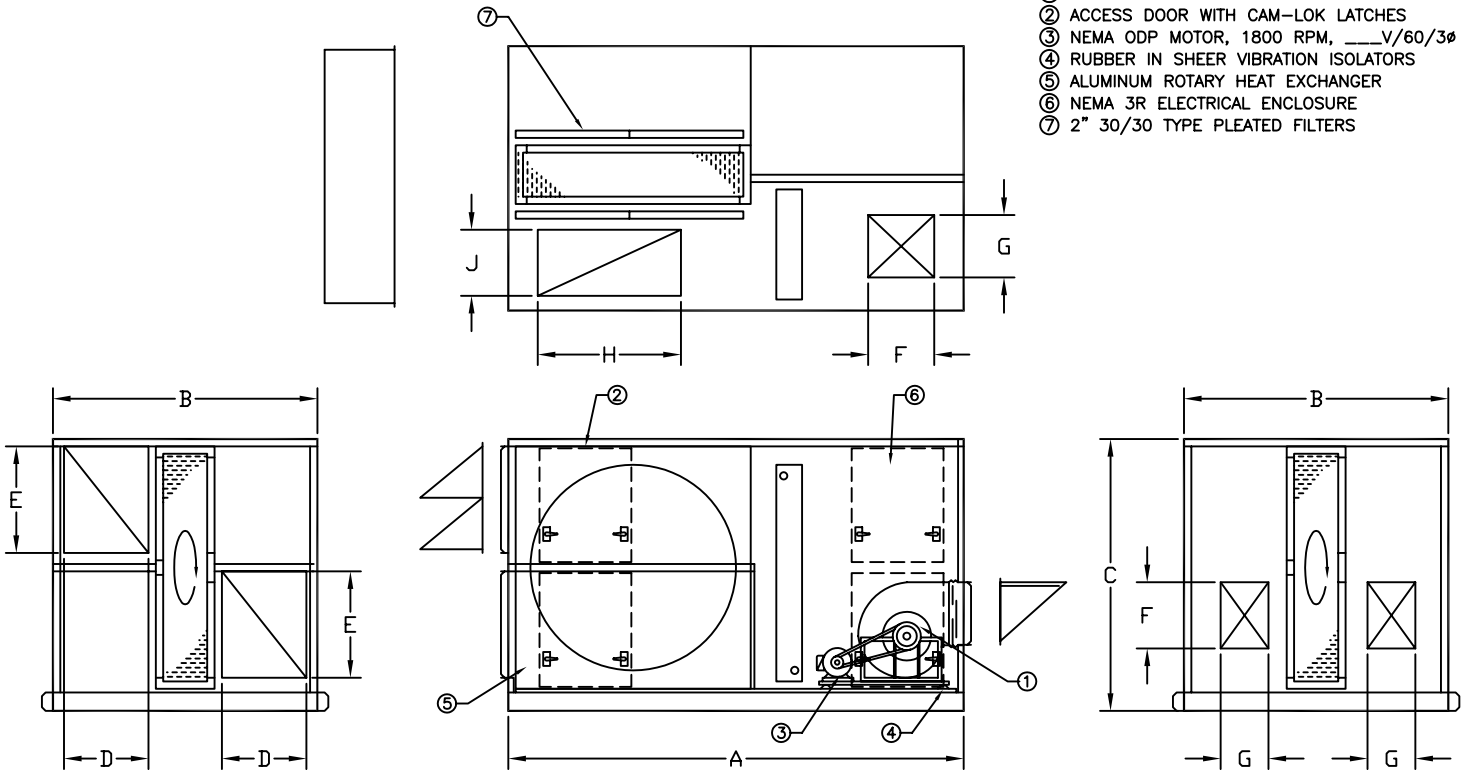


AIRFLOW CONFIGURATIONS



MODEL: AHS-

- ① FC DWDI BLOWER
- ② ACCESS DOOR WITH CAM-LOK LATCHES
- ③ NEMA ODP MOTOR, 1800 RPM, _____V/60/3φ
- ④ RUBBER IN SHEER VIBRATION ISOLATORS
- ⑤ ALUMINUM ROTARY HEAT EXCHANGER
- ⑥ NEMA 3R ELECTRICAL ENCLOSURE
- ⑦ 2" 30/30 TYPE PLEATED FILTERS

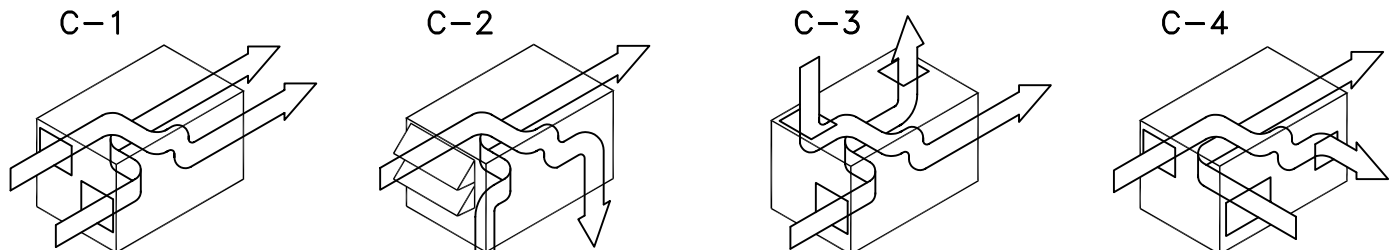


MODEL #	DIMENSIONS									BLOWER SIZE	MOTOR HP(ea.)*	EST. WEIGHT	NOMINAL CFM	NOM. EFF.
	A**	B	C	D	E	F	G	H	J					
AHS-600	72.00	36.00	36.00	14.00	14.00	10.50	9.00	24.00	6.00	7" FC	.5HP	950	500-900	75%
AHS-700	72.00	36.00	37.00	14.00	14.00	10.50	12.00	24.00	6.00	9" FC	1HP	1000	600-1200	75%
AHS-850	90.00	46.00	42.00	16.00	16.00	10.50	12.00	36.00	10.00	9" FC	1.5HP	1250	800-2000	75%
AHS-1100	96.00	50.00	52.00	18.00	22.00	12.00	11.00	46.00	10.00	10" FC	3HP	2000	1500-3500	75%
AHS-1300	108.00	60.00	64.00	20.00	24.00	14.00	13.00	48.00	12.00	12" FC	5HP	2500	2500-5000	75%
AHS-1600	132.00	68.00	72.00	24.00	28.00	16.50	15.00	54.00	16.00	15" FC	7.5HP	3000	3500-7000	75%
AHS-1750	132.00	76.00	78.00	26.00	30.00	19.50	18.00	60.00	18.00	18" FC	10HP	3800	5000-8500	75%
AHS-1900	144.00	84.00	88.00	28.00	34.00	19.50	18.00	64.00	20.00	18" FC	10HP	3800	6000-10000	75%
AHS-2250	174.00	96.00	100.00	36.00	42.00	25.50	20.50	78.00	22.00	20" FC	15HP	5500	9000-17000	75%
AHS-2500	192.00	108.00	112.00	44.00	48.00	28.00	21.00	90.00	24.00	22" FC	20HP	7000	12000-20000	75%
AHS-2750	216.00	116.00	122.00	48.00	52.00	32.00	27.00	96.00	30.00	25" FC	25HP	8000	14000-25000	75%
AHS-3000	216.00	124.00	132.00	48.00	60.00	36.00	28.00	108.0	32.00	27" FC	30HP	10000	17000-30000	75%

CONSULT FACTORY FOR AVAILABILITY FOR AHS-3000

* MOTOR HP IS BASED ON NOMINAL CFM AND MAY NOT BE SUFFICIENT FOR MAX CFM RATINGS OR HIGH E.S.P.

** ADD 24" MIN. TO DIMENSION 'A' FOR COIL SECTION.
SPECIFICATIONS AND DIMENSIONS SUBJECT TO CHANGE WITHOUT NOTICE.



AIRFLOW CONFIGURATIONS





Model AHR/AHS Unit Specification

Contractor shall provide a Heat-X-Changer Model AHR/AHS packaged (roof mounted/indoor mounted) rotary air-to-air heat recovery ventilator as manufactured by XeteX Inc. Unit to include rotary exchanger, supply air and exhaust air blowers, motors with starters and relays, air filters, and specified options.

Unit shall have a welded structural steel base with structural supports under blowers and components. Frame shall be coated with rust inhibiting paint. Lifting lugs shall be an integral part of the base. Unit floor shall be minimum 16 gauge galvanized steel.

Unit housing shall be of formed heavy gauge galvanized steel supports (18-gauge min). Panels to be 20 gauge galvanized steel with 1" thick 3# density hardboard fiberglass insulation with reinforced aluminum lining secured with metal clips and sealed with aluminum tape and silicone sealant to provide a complete vapor barrier and non-contaminating surface to all air streams. Framing and panels of dissimilar metals that could create a galvanic effect are not allowed.

Provide access to all exchanger surfaces, blowers, motors, filters, through hinged double wall gasketed access doors held closed by adjustable cam-lock latches. Continuous hollow rubber gasket shall be applied to all access doors to provide water/air-tight seals.

Rotary air-to-air heat exchanger shall have the following features:

Exchanger rotor shall be a minimum of 10" deep and shall be constructed of alternate layers of corrugated and flat aluminum. Enthalpy wheels shall have a permanently bonded desiccant adsorbent specifically developed for the selective transfer of moisture for equal transfer of sensible and latent energy. The air channels shall be formed smooth to ensure laminar airflow for low-pressure drops and allow free passage of particles up to 900 microns. Rotor structure shall be internally reinforced and mounted on pillow block type bearings. The rotor shall also be removable from the frame. Brush seals shall be provided around the periphery of the rotor and between the inlet and outlet air passages to effectively prevent air leakage and cross contamination between airflows. An adjustable purging sector shall be installed to prevent carryover of contaminated exhaust air into the supply air stream. Performance and cross contamination shall be documented through an independent laboratory conducted in accordance with ASHRAE 84-1991 and ARI standards. Optional factory mounted electronic speed controls, frost controls and special epoxy coating shall be provided as required.

Blowers shall be forward curved DWDI class I for quiet efficient operation arranged in a draw through configuration relative to exchanger. Motors to be efficient ODP T-frame, 1750 rpm nominal with minimum service factor of 1.15 mounted on adjustable base. Motor and blower to be mounted on common frame and isolated from unit case with RIS isolators and flexible duct connections. Motors and blowers shall have V-belt drives with variable pitch sheaves on motors. A hollow rubber gasket around the fan discharge shall provide an air tight seal while allowing for easy removal and replacement of the fan without screws or permanent fasteners. The discharge gasket shall isolate the fan from the unit casing and eliminate the requirement for an expansion duct fitting.

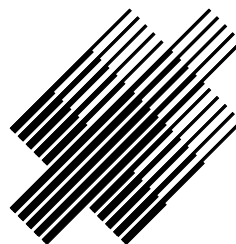
Electrical controls shall include motor starters with overloads, fuses, control transformer for low voltage controls, service switch and terminal points.

Outdoor air and return air filters shall be 2" pleated 30/30 type. Filters shall be mounted within unit in galvanized holding frames upstream of exchanger and accessible through access panels.

Dampers shall have 16 gauge galvanized hat channel frames and blades with 1/2" cadmium plated shafts and bronze bearings. Low leakage dampers have vinyl blade seals and stainless steel jamb seals. Outside air damper to be parallel blade type with 2-position overload proof direct coupled actuator. Exhaust air backdraft damper to be parallel blade with extruded aluminum blades and frame, low leakage type with silicone seals.

Weatherized outdoor construction shall include; roof panels that are cross broken to allow drainage, capped seams, weather hoods with birdscreens, outside air shut-off damper and exhaust air backdraft damper. Secondary roof panels that could trap moisture are not allowed. Roof curb shall be heavy gauge galvanized steel with additional supports and cross members as needed. Curb to have 1" to 1.5" thick fiberglass insulation and wood nailer.

Represented By:



XeteX Inc.

3530 East 28th Street
Minneapolis, MN 55406
(612) 724-3101
(612) 721-6303 Fax